



Chandra Shipping
International

Company Profile

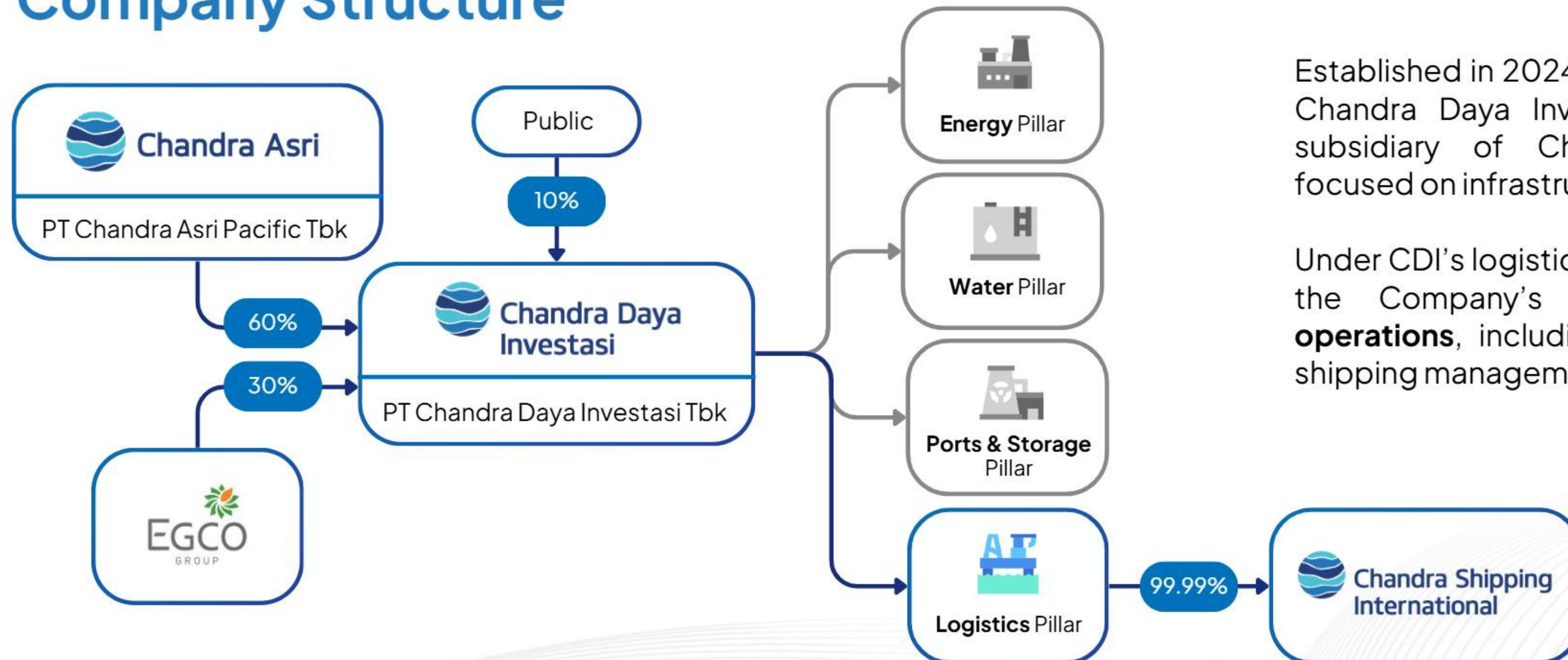
Your Growth Partner



Company Overview

PT Chandra Shipping International (CSI) enables **integrated connectivity** across **jetty access, storage facilities, and shipping networks**. CSI supports **downstream growth** in the chemical and energy industries, while strengthening **regional competitiveness** across Asia through seamless logistics integrations.

Company Structure



Established in 2024, CSI is owned by PT Chandra Daya Investasi Tbk (CDI), a subsidiary of Chandra Asri Group focused on infrastructure businesses.

Under CDI's logistics pillar, CSI manages the Company's **maritime logistics operations**, including vessel fleet and shipping management.

Vision & Mission

Vision

To be regional's leading shipping and logistics partner, powering the energy, chemical, and infrastructure supply chains

Mission

Deliver efficient, reliable, and sustainable shipping and logistics solutions that support supply chain resilience



Services

CSI provides safe, dependable, and efficient marine logistic services to meet diverse operational needs.



Ship Ownership



Ship Chartering

Spot/Voyage Charter, Contract of Affreightment (COA), Consecutive Voyage Charter (CVC), and Time Charter (T/C)



Operation Management

Why Choose CSI?

Specialized Fleets

Flexible Chartering Options

Operational Excellence

Reliability & Safety

Fleet Overview



Gas Carrier

C2

C3

CC4

Butadiene

B1



Chemical Tanker

Py-gas

Benzene

Styrene Monomer

MTBE



Bitumen Tanker

Bitumen

Gas (LPG) Carriers



Gas Marella

- Flag : Indonesia
- Built : 2011
- DWT : 4998 MT
- Capacity : 4918 m³



Gas Estella

- Flag : Indonesia
- Built : 2006
- DWT : 4253 MT
- Capacity : 5018 m³



Gas Aria

- Flag : Indonesia
- Built : 2006
- DWT : 5349 MT
- Capacity : 4919 m³



Gas Valeria

- Flag : Panama
- Built : 2017
- DWT : 5189 MT
- Capacity : 4915 m³

Gas (C2) Carriers



Gas Rosea

- Flag : Indonesia
- Built : 2007
- DWT : 7400 MT
- Capacity : 6328.18 m³



Gas Lily

- Flag : Indonesia
- Built : 2007
- DWT : 4996 MT
- Capacity : 6459.98 m³

Chemical Tankers



MT Erawan 12

- Flag : Indonesia
- Built : 2003
- DWT : 6,465 MT
- Capacity : 7,242 M3



MT Lotus

- Flag : Singapore
- Built : 2008
- DWT : 9,553 MT
- Capacity : 10,108 M3



MT Cassia

- Flag : Panama
- Built : 2017
- DWT : 9,179 MT
- Capacity : 9,398 M3

Chemical Tankers



MT Novah

- Flag : Indonesia
- Built : 2026
- DWT : 9,328 MT
- Capacity : 9,423 M3



MT Boreas

- Flag : Indonesia
- Built : 2026
- DWT : 9,328 MT
- Capacity : 9,423 M3

Bitumen Tankers



Marlin Pearl

- Flag : Panama
- Built : 2011
- DWT : 6,228 MT
- Capacity : 5,796 M3

Gas Vessel

Aria

Marella

Estella

Valeria

Gas Lily

Gas Rosea

Cargo &
Capabilities

LPG, Propylene, Butadiene, Mix C4,
Raffinate 1, Raffinate 2

Ethylene / C2

Trading
Area

South East Asia (Singapore, Malaysia, Thailand, Vietnam, Brunei, Cambodia, Phillipines, Indonesia), East and North East Asia (Korea, Japan, China), India

Chemical & Oil Tankers

	Erawan 12	Boreas	Novah	Lotus	Cassia	Marlin Pearl
Cargo & Capabilities	Condensate, Pygas, BTX, Styrene Monomer MTBE, Caustic Soda, Palm Products, Acid, etc.					Bitumen
Trading Area	South East Asia (Singapore, Malaysia, Thailand, Vietnam, Brunei, Cambodia, Phillipines, Indonesia), East and North East Asia (Korea, Japan, China), India, Middle East, Europe					

Customer Portofolio





**Chandra Shipping
International**

PT Chandra Shipping International

A Member of Chandra Asri Group

Head Office

Wisma Barito Pacific Tower A, 7th Fl.
Jl. Let. Jend. S. Parman Kav. 62-63,
Jakarta 11410, Indonesia

P | (+62-21) 530 7950
F | (+62-21) 530 8950

Digital Platform

 www.chandrashipping.com